

2015 Data Digest



School of Education
UNIVERSITY OF WISCONSIN-MADISON

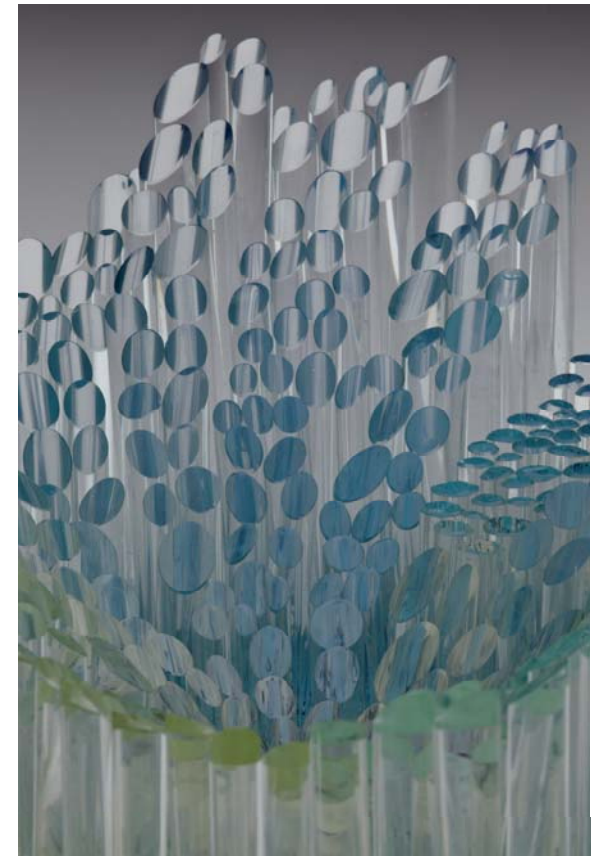
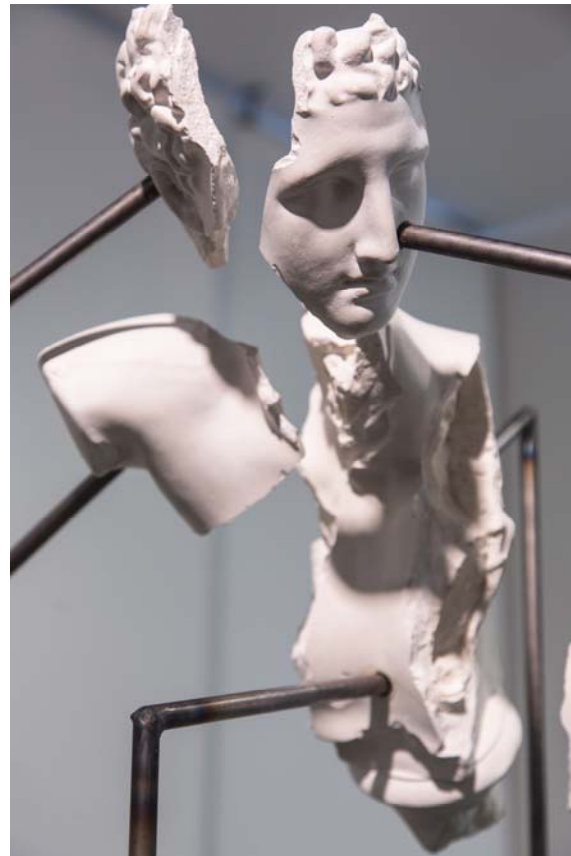


Table of Contents

Students

- page 1 Enrollment Trends
- page 2 Enrollment Trend Charts
- page 3 Student Ethnicity/Diversity
- page 4 14-year Enrollment Trends
- page 5 Enrollment by Academic Department
- page 6 Degrees Conferred by Student Level

Instruction

- page 7 Credit Production by Department, Academic Year

Faculty & Staff

- page 8 FTE Employee Category
- page 9 FTE by Administrative Unit
- page 10 Headcount by Employee Category
- page 11 Headcount of Faculty and Instructional Staff by Gender and Race/Ethnicity

Finance

- page 12 Expenditures Summary
- page 13 Expenditures by Funding Source & Activity
- page 14 2013-14 Department Expenditures by Funding Source
- page 15 2013-14 Department Expenditures by Activity

Extramural Funding

- page 16 Sponsored Projects Summary
- page 17 Sponsored Projects by Administering Unit
- page 18 Non-Federal Sponsored Projects
- page 19 Federal Sponsored Projects

2015 Data Digest

Students

Enrollment Trends

Enrollment Trend Charts

Student Ethnicity/Diversity

15-year Enrollment Trends

Enrollment by Academic Department

Degrees Conferred by Student Level

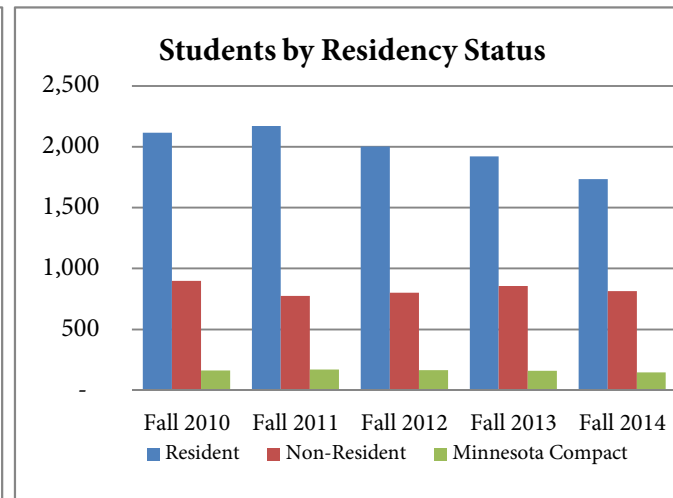
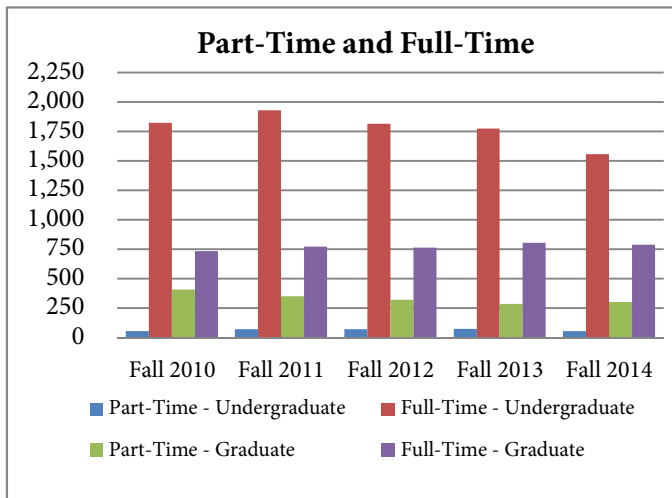
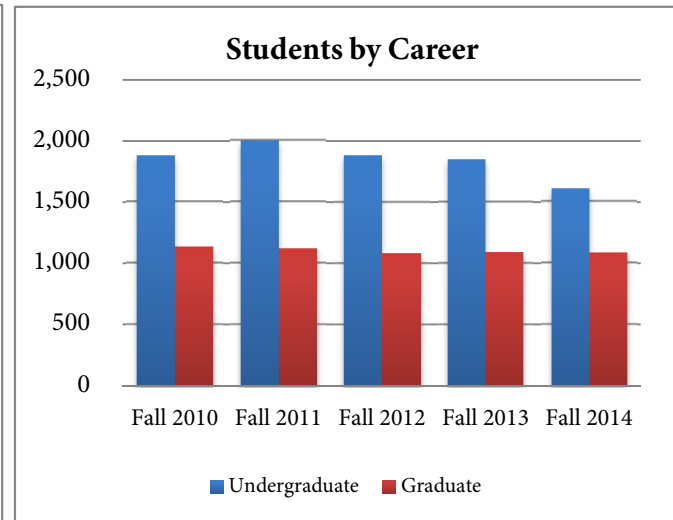
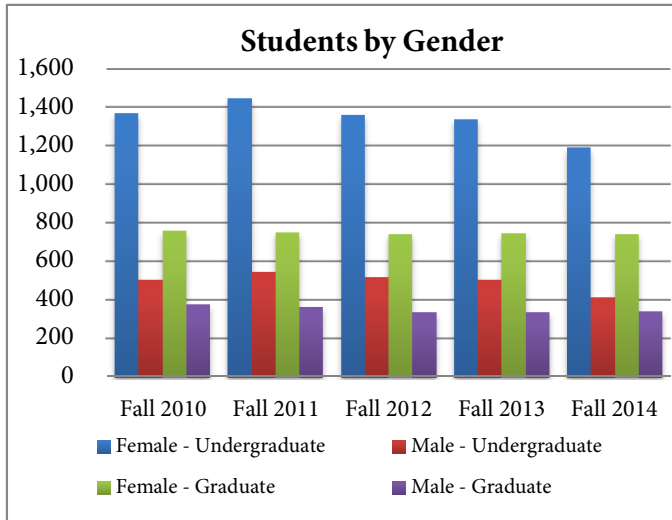


Enrollment Trends

	Fall 2010	Fall 2011	Fall 2012	Fall 2013	Fall 2014
Total School of Education Students	3,029	3,131	2,983	2,955	2,706
Special Students	14	16	15	16	7
Undergraduate & Graduate	3,015	3,115	2,968	2,939	2,699
Undergraduate Students	1,877	1,996	1,884	1,848	1,610
Female	1,371	1,447	1,362	1,340	1,192
Male	506	549	522	508	418
Part-Time	54	69	70	74	54
Full-Time	1,823	1,927	1,814	1,774	1,556
Resident	1,473	1,557	1,441	1,382	1,214
Non-Resident	404	287	294	330	276
Minnesota Compact	143	152	149	136	120
Graduate Students	1,138	1,119	1,084	1,091	1,089
Female	760	754	745	750	745
Male	378	365	339	341	344
Part-Time	406	349	321	286	302
Full-Time	732	770	763	805	787
Resident	643	613	561	540	521
Non-Resident	495	487	507	526	540
Minnesota Compact	19	19	16	25	28

Student headcounts are tabulated on the 10th day of the Fall Semester of each academic year.
 These totals match the annual Enrollment Reports from the Office of the Registrar.

Enrollment Trend Charts



Student Ethnicity/Diversity

	Fall 2010	Fall 2011	Fall 2012	Fall 2013	Fall 2014
Total Graduate & Undergraduate Students	3,015	3,115	2,968	2,939	2,699
Total Targeted Minority Students	(12.3%) 370	(12.8%) 399	(13.2%) 392	(14.3%) 420	(14.9%) 402

Undergraduate

White/European American	1,615	1,705	1,600	1,537	1,342
Targeted Minority Undergraduates*	(9.6%) 181	(10.6%) 212	(11.0%) 208	(12.3%) 227	(11.6%) 187
Black/African American	46	52	47	63	49
Latina/o	71	85	80	79	72
Southeast Asian	40	44	46	51	45
American Indian/AK Native	20	23	24	21	14
Hawaiian	4	8	11	13	7
Asian/Pacific Islander	38	47	47	55	53
International	13	12	18	23	25
Blank/Unknown	30	20	11	6	3

Graduate

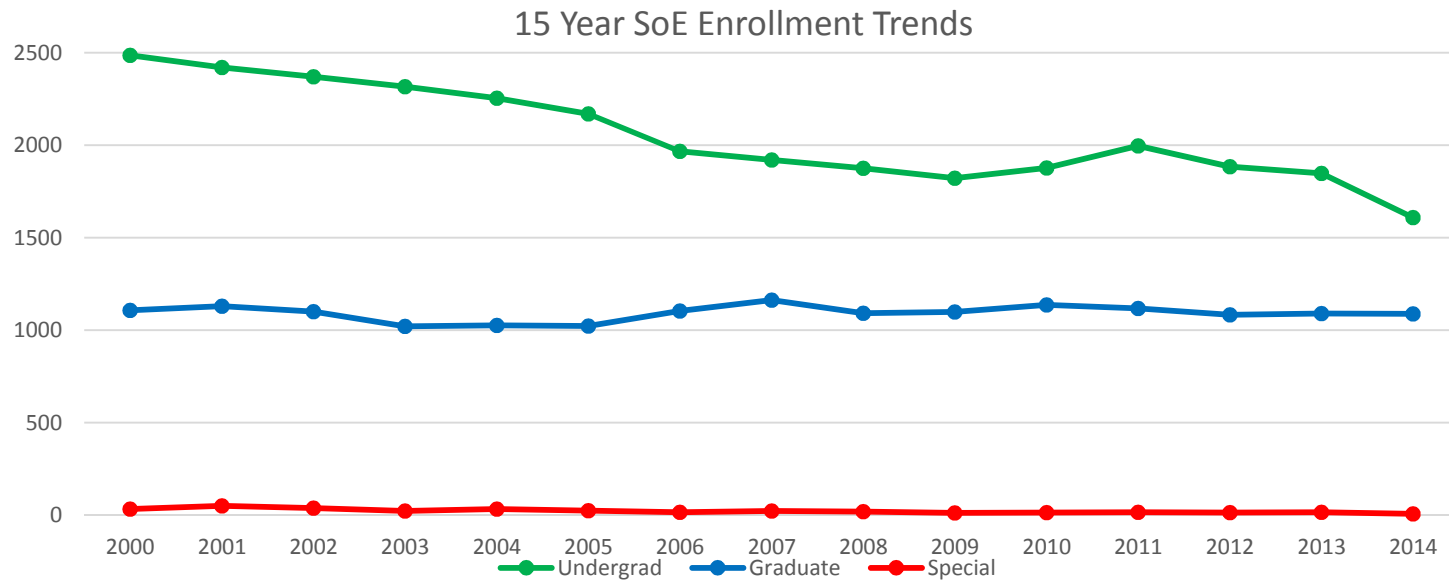
White/European American	738	712	677	663	639
Targeted Minority Undergraduates*	(16.6%) 189	(16.7%) 187	(17.0%) 184	(17.7%) 193	(19.7%) 215
Black/African American	79	77	72	82	98
Latina/o	69	67	71	73	79
Southeast Asian	13	16	14	14	12
American Indian/AK Native	26	24	25	24	26
Hawaiian	2	3	2	-	-
Asian/Pacific Islander	29	35	35	47	44
International	149	160	162	161	163
Blank/Unknown	33	25	26	27	28

Student headcounts are tabulated on the 10th day of the Fall semester of each academic year.

*Targeted minority students are those counted for campus diversity programs. Southeast Asian students include those of Laotian, Cambodian, or Vietnamese heritage.

15 Year SoE Enrollment Trends

	2000	2001	2002	2003	2004	2005	2006	2007	2008	2009	2010	2011	2012	2013	2014
Undergrad	2487	2420	2371	2317	2254	2169	1968	1920	1875	1822	1877	1996	1884	1848	1610
Graduate	1108	1131	1100	1021	1027	1023	1105	1163	1092	1099	1138	1119	1084	1091	1089
Special	34	51	39	23	33	25	17	23	20	13	14	16	15	16	7



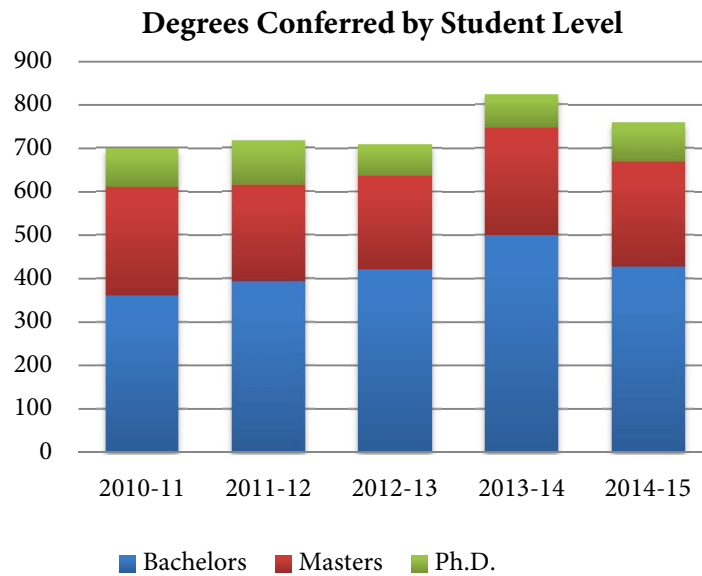
Student headcounts are tabulated on the 10th day of the Fall Semester of each academic year.

2014 Grad and Undergrad Enrollment of Academic Programs

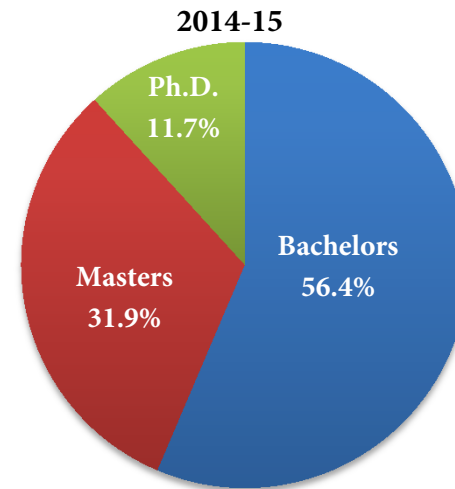
Department	Academic Program	Fall 2014	% of Students in Dept.
Art	Art	268	11.2%
	Art Education	6	
	Bachelor of Fine Arts	17	
	Pre-Art Education	11	
Dance	Bachelor of Fine Arts - Dance	6	1.2%
	Bachelor of Science - Dance	26	
C&I	Curriculum & Instruction	286	28.8%
	Education 2nd Certification	7	
	Elementary Education	246	
	Pre-Elementary Education	133	
	Pre-Secondary Education	32	
	Secondary Education	76	
ELPA	Ed Leadership & Policy Analysis	254	9.4%
EPS	Educational Policy Studies	70	2.6%
Ed Psych	Educational Psychology	119	4.4%
RPSE	Special Education	65	12.8%
	Pre-Special Educ & Rehab Psych	72	
	Rehabilitation Psychology	210	
Counseling Psych	Counseling	29	2.6%
	Counseling Psychology	42	
Kinesiology	Athletic Training	48	27.0%
	Kines - Pre-Phy Ed Tchr Prep	7	
	Kinesiology	265	
	Kines-Pre-Exer/Pre-Motor Behvr	335	
	Occupational Therapy	75	
	Pre-Occupational Therapy	1	
Grand Total		2706	100.0%

Degrees Conferred by Student Level

	2010-11	2011-12	2012-13	2013-14	2014-15
School of Education Total	699	718	709	825	759
Bachelors	361	393	421	501	428
Masters	250	222	216	247	242
Ph.D.	88	103	72	77	89
% Bachelors	51.6%	54.7%	59.4%	60.7%	56.4%
% Masters	35.8%	30.9%	30.5%	29.9%	31.9%
% Ph.D.	12.6%	14.3%	10.2%	9.3%	11.7%

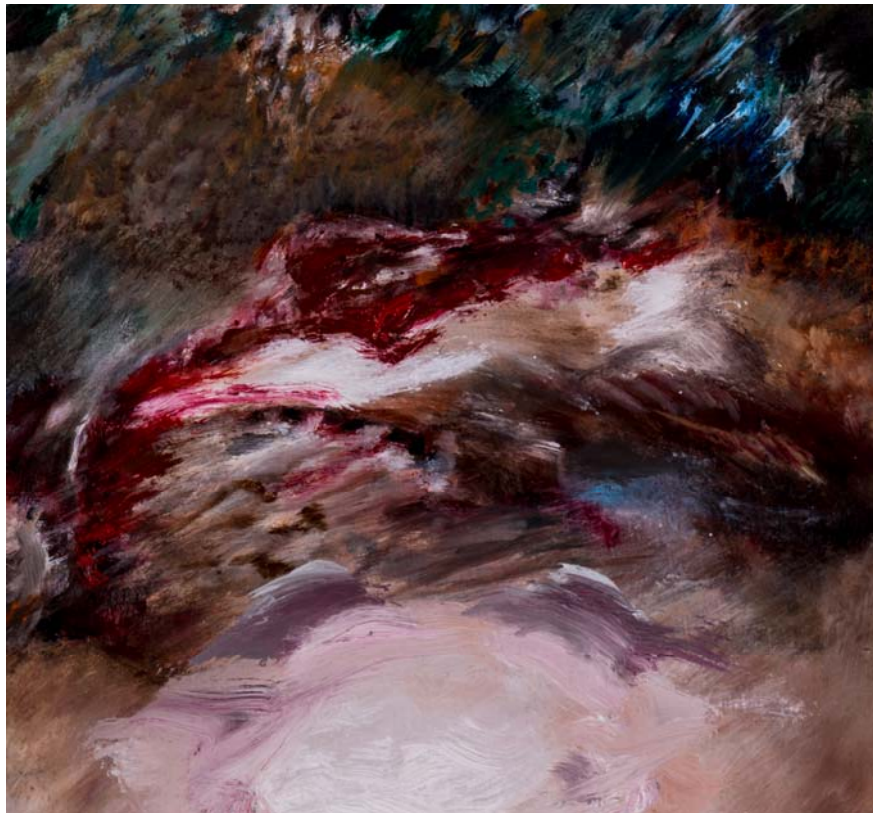


Degrees Conferred by Student Level:



The yearly degrees conferred totals are calculated starting with the Fall running through the Summer term.
Degree totals will change to reflect retroactively granted degrees.

2015 Data Digest



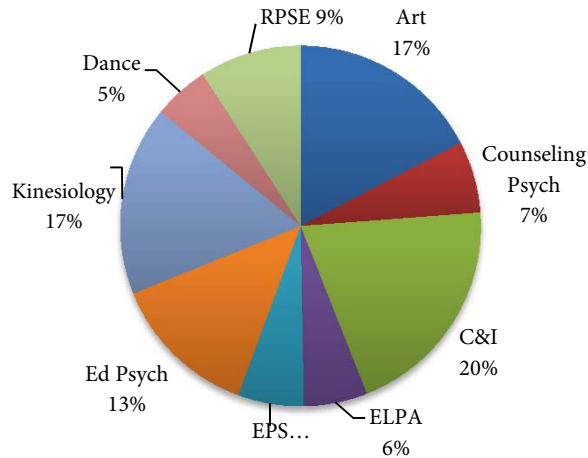
Instruction

Credit Production by Department, Academic Year

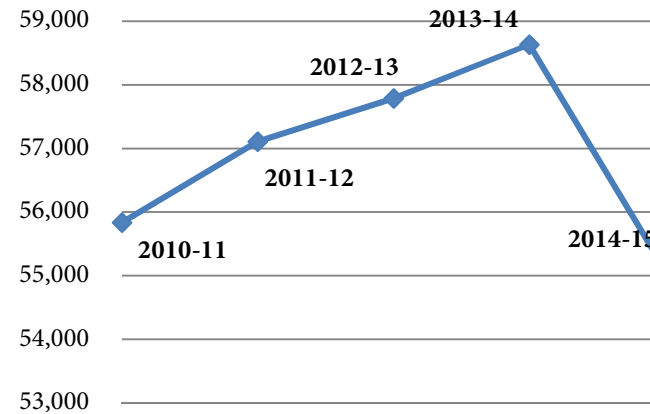
Credit Production by Department - Academic Year (Fall & Spring)

Department	2010-11	2011-12	2012-13	2013-14	2014-15
Art	10,428	10,415	9,730	9,932	9,568
Counseling Psychology*	3,104	3,368	3,365	3,263	3,547
Curriculum and Instruction	13,315	13,129	13,604	13,962	11,128
Educational Leadership & Policy Analysis*	2,539	2,823	2,927	3,098	3,143
Educational Policy Studies*	2,880	3,258	3,281	3,633	3,258
Educational Psychology*	6,722	6,576	7,035	6,982	7,301
Kinesiology	9,796	10,333	9,771	9,211	9,369
Dance	2,748	2,503	2,728	2,682	2,752
Rehabilitation Psychology & Special Education	4,305	4,706	5,346	5,870	5,025
Total	55,836	57,109	57,787	58,633	55,091

2014-15 Credits by Department



Total SoE Credits Trend



* Denotes department offering only graduate programs but may offer undergraduate courses.

Note: Credit follows instructor attributes credits to the departments that pay the section instructor's salary.

2015 Data Digest

Faculty & Staff

FTE Employee Category

FTE by Administrative Unit

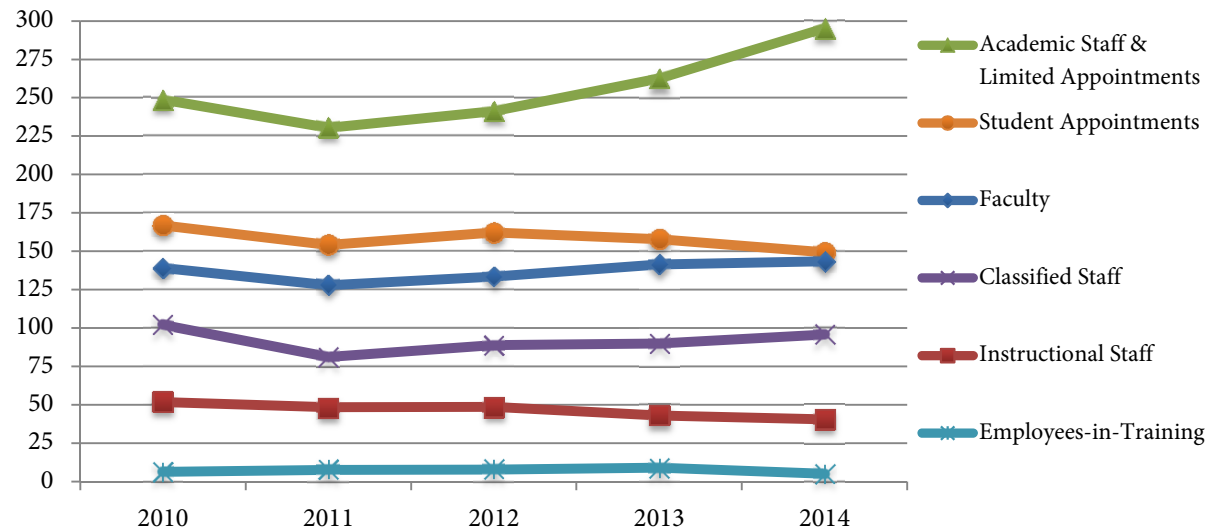
Headcount by Employee Category

Headcount of Faculty and Instructional Staff by Gender
and Race/Ethnicity



FTE by Employee Category*

Employee Category	2010	2011	2012	2013	2014
Faculty	139.1	127.9	133.5	141.4	143.4
Instructional Staff	51.8	48.4	48.6	43.1	40.6
Academic Staff & Limited Appointments	248.8	230.5	241.3	262.5	295.2
Classified Staff	102.0	81.1	88.9	90.0	95.8
Employees-in-Training	6.3	7.6	7.8	9.0	5.2
Student Appointments	166.9	154.1	162.2	157.9	149.3
Total	714.9	649.6	682.4	703.9	729.5



*FTE data include all funding sources (state support, federal, and non-federal grants, gifts, and earned income).

Totals include LTE, student, and unclassified hourly workers.

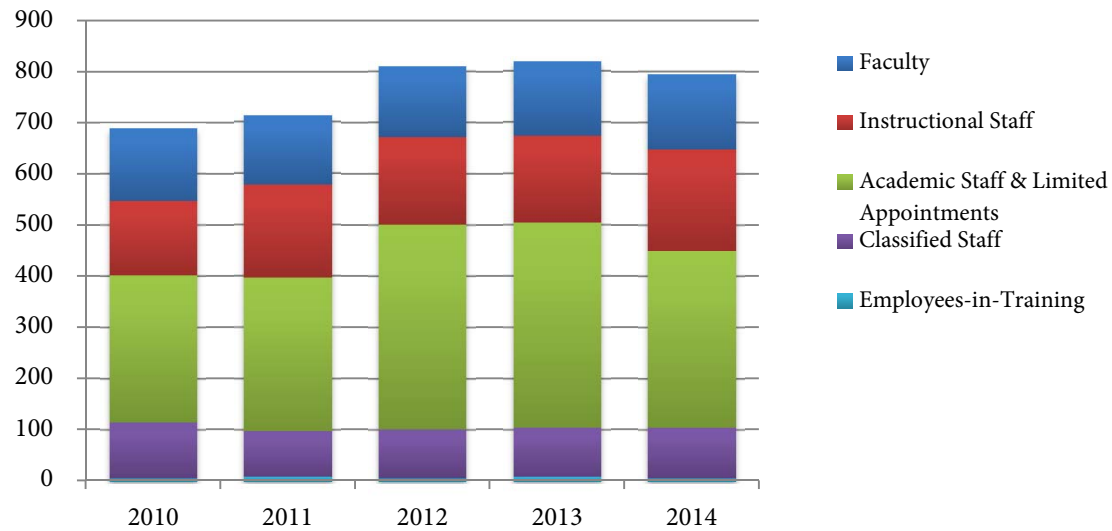
FTE by Administrative Unit

	2010	2011	2012	2013	2014
Dean's Office	17.5	17.0	15.6	15.9	17.1
External Relations	3.6	1.8	4.2	6.0	4.0
MERIT	21.8	20.2	19.1	18.6	20.8
Academic Services	11.8	10.0	10.4	10.4	11.6
Education Outreach	16.3	16.6	19.1	16.6	18.3
Art	68.1	63.5	65.6	63.4	64.3
Counseling Psychology	20.3	20.5	21.4	19.5	21.5
Curriculum & Instruction	68.7	66.9	66.0	67.5	65.0
Educational Leadership & Policy Analysis	30.3	25.4	27.2	29.7	31.7
Education Policy Studies	17.6	14.9	15.4	19.9	20.2
Educational Psychology	33.4	30.6	35.7	37.0	36.5
Kinesiology	55.0	55.0	57.4	50.7	50.9
Dance	16.1	14.2	15.6	15.7	16.1
Rehab Psych & Special Education	29.6	30.2	29.4	33.7	29.6
Arts Institute	7.4	7.1	7.2	7.6	14.4
CCBC	3.1	2.6	2.6	2.8	3.2
CEO	9.0	-	-	-	-
Child Care and Family Resources	-	4.5	4.5	5.0	5.0
Educ. & Psych. Training Center	4.4	1.6	1.6	1.1	1.1
Career Center	9.8	9.4	9.7	9.9	8.2
Morgridge Center	-	-	4.8	7.1	10.7
OMAI	3.0	-	-	-	-
OURL	25.4	4.5	3.5	4.5	4.5
PEOPLE Program	23.9	-	-	-	-
Testing & Evaluation Center	10.7	11.5	11.0	11.0	10.5
WCER	215.3	216.6	233.1	247.6	261.5
WISCAPE	4.3	4.0	4.0	2.6	2.8
Total	726.1	648.2	683.9	703.8	729.5

*In 2008-09 The Center on Education and Work (CEW) was merged with the Wisconsin Center for Education Research (WCER).

Headcount by Employee Category

Employee Category	2010	2011	2012	2013	2014
Faculty	143	135	137	146	148
Instructional Staff	145	182	171	169	197
Academic Staff & Limited Appointments	287	299	401	400	345
Classified Staff	109	89	94	96	100
Employees-in-Training	6	9	7	9	6
Total	690	714	810	820	796



Headcounts include SoE employees with primary appointments in A17. Each person is assigned to their primary unit and highest appointment type in the order listed above.

Note: Starting in 2011, UW-System implemented a new HR system resulting in some changes to the process by which appointments are counted.

Faculty Headcount by Rank, Gender, and Race/Ethnicity

Gender		2010	2011	2012	2013	2014
Professor	Women	31	30	28	29	31
	Men	50	42	43	43	42
Associate Professor	Women	9	13	15	16	15
	Men	13	11	10	12	11
Assistant Professor	Women	23	21	24	28	32
	Men	17	18	17	18	17
Instructional Academic Staff	Women	86	105	109	108	118
	Men	59	81	71	61	78
Race/Ethnicity						
Professor	Black	3	4	4	5	4
	Asian/Pacific Islander	6	5	5	6	6
	American Indian	0	-	-	-	-
	Hispanic	4	5	5	5	5
	White/Unknown	68	58	57	56	58
	Two or More Races	-	-	-	-	-
Associate Professor	Black	1	-	-	1	2
	Asian/Pacific Islander	1	2	2	1	-
	American Indian	-	-	1	1	1
	Hispanic	1	-	-	2	2
	White/Unknown	19	22	26	23	21
	Two or More Races	-	-	-	-	-
Assistant Professor	Black	2	3	3	4	4
	Asian/Pacific Islander	3	2	2	3	4
	American Indian	1	1	-	-	-
	Hispanic	2	2	2	1	1
	Hawaiian	1	-	-	-	-
	White/Unknown	31	30	32	35	36
Two or More Races	-	1	2	3	4	
Instructional Academic Staff	Black	6	6	7	4	8
	Asian/Pacific Islander	1	5	4	5	10
	American Indian	-	-	-	-	-
	Hispanic	1	1	4	4	5
	White/Unknown	135	176	167	157	172
	Two or More Races	-	-	-	1	2

2015 Data Digest

Finance

Expenditures Summary

Expenditures by Funding Source & Activity

2013-14 Department Expenditures by Funding Source

2013-14 Department Expenditures by Activity

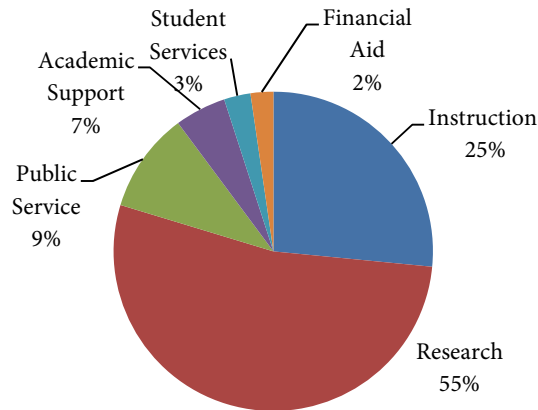


Expenditures Summary

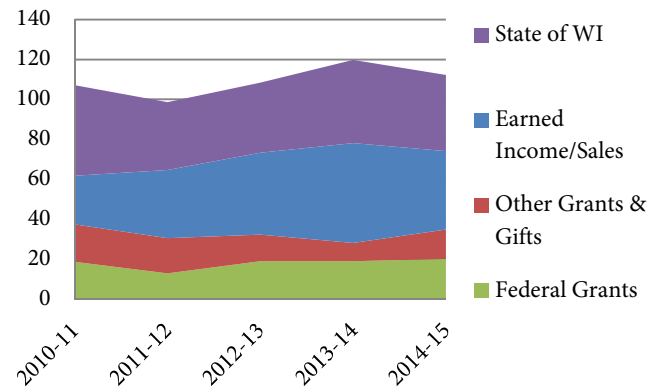
Activity	2010-11	2011-12	2012-13	2013-14	2014-15
Instruction	28,289,900	27,735,125	28,364,174	29,729,945	29,779,564
Research	28,520,081	35,483,052	51,922,109	65,983,678	59,670,700
Public Service	22,470,013	24,866,060	17,247,488	10,476,574	11,379,305
Academic Support	6,833,553	5,811,039	5,891,225	7,987,705	5,830,768
Student Services	7,044,326	2,561,733	2,661,300	3,216,644	2,994,603
Financial Aid	6,137,419	2,211,802	2,294,923	2,362,550	2,579,126
Plant Additions	7,842,363	-	-	-	-
Total	107,137,655	98,668,812	108,381,219	119,757,096	112,234,066

Fund Source	2010-11	2011-12	2012-13	2013-14	2014-15
State of WI	45,427,457	34,056,511	35,115,708	41,688,686	38,122,152
Earned Income/Sales	24,362,321	34,167,379	41,104,953	49,943,365	39,350,257
Other Grants & Gifts	18,744,260	17,653,460	13,276,605	9,241,312	14,727,799
Federal Grants	18,603,617	12,791,462	18,883,954	18,883,733	20,033,858
Total	107,137,655	98,668,812	108,381,219	119,757,096	112,234,066

Expenditures by Activity 2015



Expenditures by Fund Source 2010-2015



Expenditures by Funding Source and Activity

Fund Source	2010-11	2011-12	2012-13	2013-14	2014-15
School of Education					
State of Wisconsin	44,280,050	32,912,873	34,164,931	40,764,806	37,140,945
Earned Income/Sales	24,362,321	34,167,379	41,104,953	49,943,365	39,350,258
Non-Federal Grants & Gifts	18,742,899	17,651,524	13,276,605	9,241,312	14,727,799
Federal Grants	18,603,617	12,791,462	18,882,275	18,882,820	20,033,265
	105,988,887	97,523,237	107,428,763	118,832,303	111,252,267
Summer Session Support					
State of Wisconsin	1,147,407	1,143,638	950,777	923,880	981,206
Federal Grants	1,362	1,936	1,679	913	593
	1,148,768	1,145,574	952,456	924,793	981,799
Fund Source Total	107,137,655	98,668,812	108,381,219	119,757,096	112,234,066
Activity					
School of Education					
Instruction	27,141,131	26,589,550	27,411,718	28,805,152	28,797,765
Research	28,520,081	35,483,052	51,922,109	65,983,678	59,670,700
Public Service	22,470,013	24,866,060	17,247,488	10,476,574	11,379,305
Academic Support	6,833,553	5,811,039	5,891,225	7,987,705	5,830,768
Student Services	7,044,326	2,561,733	2,661,300	3,216,644	2,994,603
Financial Aid	6,137,419	2,211,802	2,294,923	2,362,550	2,579,126
Plant Additions	7,842,363				
	105,988,887	97,523,237	107,428,763	118,832,303	111,252,267
Summer Session Support					
Instruction	1,148,768	1,145,574	952,456	924,793	981,799
Activity Total	107,137,655	98,668,812	108,381,219	119,757,096	112,234,066

2014-15 Department Expenditures by Funding Source

	State of Wisconsin	Earned Income / Sales	Federal Grants	Non-Federal Grants & Gifts	Total
Dean's Office	1,204,499	333,658	307,705	1,819,300	3,665,162
External Relations	279,078	19,254	1,208	183,687	483,227
Morgridge Center for Public Service	322,631	8,677	55,536	959,044	1,345,888
OURR	576,218	-	2,343	1,145,885	1,724,446
MERIT	1,946,285	14,652	68,308	111,980	2,141,225
Art	4,646,075	1,010,181	89,131	1,066,461	6,811,848
Arts Institute	1,250,509	301,663	-	148,921	1,701,093
Child Care and Family Resources	75,450	1,075,110	134,178	591,410	1,876,148
CCBC	163,889	6,294	2,669	161,335	334,187
Counseling Psychology	1,740,022	21,491	13,664	49,859	1,825,036
Curriculum & Instruction	5,452,422	16,842	43,566	1,003,092	6,515,922
Ed. Leadership & Policy Analysis	3,099,323	107,303	25,094	(46,395)	3,185,325
Education Policy Studies	1,641,394	-	1,999	457,954	2,101,347
Educ. & Psych. Training Center	21,128	40,087	-	-	61,215
Educational Psychology	3,136,148	(1,500)	127,196	323,434	3,585,278
Education Outreach	1,213,671	1,024,315	2,891	594,249	2,835,126
Academic Services	905,215	-	2,269	-	907,484
Kinesiology	3,712,825	32,325	1,349,647	611,577	5,706,374
Dance	1,245,844	55,972	24,043	398,269	1,724,128
WCER	1,562,686	34,815,735	16,619,489	5,106,513	58,104,423
Rehab Psych. & Spec. Education	2,064,669	-	1,161,532	18,058	3,244,259
Ed Portfolios and Career Services	314,302	371,907	196	-	686,405
Testing & Evaluation Center	1,285,404	96,291	1,194	-	1,382,889
WISCAPE	262,465	-	-	21,616	284,081
Theatre & Drama	-	-	-	1,550	1,550
Total	38,122,152	39,350,257	20,033,858	14,727,799	112,234,066

Note: Totals Include School of Education Funds, Graduate School, and Summer term support.

2014-15 Department Expenditures by Activity

	Instruction	Research	Public Service	Academic Support	Student Services	Financial Aid	Total
Dean's Office	186,611	1,307,428	16,441	1,291,479	(16,078)	879,282	3,665,163
External Relations	-	-	-	483,226	-	-	483,226
MERIT	110,576	71,032	-	1,959,617	-	-	2,141,225
Academic Services	166,908	-	-	740,576	-	-	907,484
Education Outreach	546,469	201,875	2,086,782	-	-	-	2,835,126
Art	5,883,864	698,645	-	211,547	-	17,793	6,811,849
Counseling Psych	1,614,322	86,699	337	123,678	-	-	1,825,036
C & I	5,351,197	531,792	114,449	333,584	-	184,899	6,515,921
ELPA	2,736,433	268,507	107,303	7,130	-	65,952	3,185,325
Ed. Policy Studies	1,565,739	532,109	-	2,000	-	1,500	2,101,348
Educational Psych	2,917,773	430,025	5,907	208,218	-	23,355	3,585,278
Kinesiology	3,400,282	2,015,792	30,383	149,554	-	110,362	5,706,373
Dance	1,528,148	193,322	2,657	-	-	-	1,724,127
Rehab Psych & Sp. Ed.	2,058,991	964,554	86,134	2,810	-	131,771	3,244,260
Arts Institute	263,053	-	1,438,040	-	-	-	1,701,093
CCBC	-	-	137,301	196,886	-	-	334,187
Child Care and Fam. Re:	-	-	-	-	1,876,147	-	1,876,147
EPTC	61,216	-	-	-	-	-	61,216
EPCS	-	123	-	-	686,283	-	686,406
Morgridge Center	-	103	1,345,785	-	-	-	1,345,888
OURR	3,264	4,968	2,333	101,418	448,250	1,164,212	1,724,445
Testing & Evaluation	1,382,888	-	-	-	-	-	1,382,888
WCER	6	52,097,571	6,005,453	1,394	-	-	58,104,424
WISCAPE	276	266,155	-	17,650	-	-	284,081
Theatre & Drama	1,550	-	-	-	-	-	1,550
Total	29,779,566	59,670,700	11,379,305	5,830,767	2,994,602	2,579,126	112,234,066

Note: Totals include School of Education Funds, Graduate School funds, and Summer term support.

2015 Data Digest

Extramural Funding

Sponsored Projects Summary

Sponsored Projects by Administering Unit

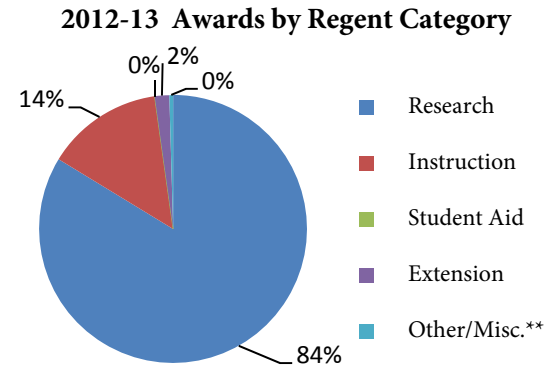
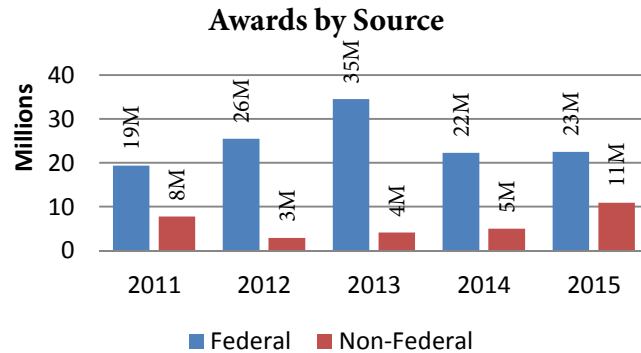
Non-Federal Sponsored Projects

Federal Sponsored Projects



Sponsored Projects Summary

	2010-11	2011-12	2012-2013	2013-2014	2014-2015
Total Awards*	27,099,400 (117)	28,418,279 (109)	38,623,766 (127)	27,240,009 (102)	33,374,872 (101)
Awards by Regent Category					
Research	23,474,197 (90)	26,932,865 (84)	23,474,197 (103)	25,500,752 (90)	27,933,328 (83)
Instruction	474,767 (3)	469,328 (4)	474,176 (4)	150,000 (1)	4,707,163 (4)
Student Aid	2,052,000 (4)	5,000 (1)	1,026,000 (2)	1,000,000 (1)	0
Extension	990,577 (14)	506,566 (9)	502,408 (13)	581,131 (9)	590,727 (7)
Other/Misc.**	107,859 (6)	504,520 (11)	272,398 (5)	42,125 (1)	143,654 (7)
Awards by Source					
Federal	19,363,221 (83)	25,522,275 (77)	34,518,612 (78)	22,296,666 (63)	22,500,267 (67)
Non-Federal	7,736,179 (34)	2,896,004 (32)	4,105,154 (49)	4,977,343 (39)	10,874,605 (34)



Note: Includes 133 & 144 based on award totals reported to Regents and housed in SoE. Amounts may reflect multi-year funding.

*Number of awards is denoted in parentheses.

**Includes funds for the following Regent Categories: Library, Physical Plant, and Miscellaneous (multiple uses).

Sponsored Projects by Administering Unit

	2010-11	2011-12	2012-2013	2013-14	2014-15	5-year Total	Percent of Total
WCER	23,769,245	24,273,079	34,907,748	23,515,360	29,637,816	136,103,248	87.93%
Kinesiology	1,162,430	2,208,834	1,722,519	1,779,786	1,524,935	8,398,504	5.43%
Rehab Psych & Special Ed	1,174,761	1,315,248	1,327,134	1,267,384	1,538,081	6,622,608	4.28%
CEW	21,750	-	-	-	-	21,750	0.01%
Ed Leadership & Policy Analysis	-	130,000	6,000	99,768	33,851	269,619	0.17%
Curriculum & Instruction	365,658	-	111,800	-	-	477,458	0.31%
Ed Psych Training Center	245,509	-	-	-	-	245,509	0.16%
Ed Outreach	195,940	188,251	226,045	201,915	202,500	1,014,651	0.66%
Arts Institute	5,000	2,500	2,580	-	-	10,080	0.01%
Ed Psychology	68,207	153,557	30,005	79,048	85,429	416,246	0.27%
Coop Children's Book Center	90,900	81,810	176,610	94,800	101,734	545,854	0.35%
Ed Policy Studies	-	60,000	98,325	46,655	64,033	269,013	0.17%
Counseling Psychology	-	5,000	-	2,800	-	7,800	0.01%
Dance	-	-	15,000	-	-	15,000	0.01%
Child Care and Family Resource	-	-	-	186,493	186,493	372,986	0.24%
Total	27,099,400	28,418,279	38,623,766	27,274,009	33,374,872	154,790,326	100.00%

Note: Includes 133 & 144 funds. Based on award totals reported to Regents and housed in SoE. Amounts may reflect multi-year funding

Totals reflect administrating unit, not Principal Investigator home department.

Non-Federal Sponsored Projects

	2010-11	2011-12	2012-13	2013-14	2014-15	5-year Total	Percent of Total
Total Awards	27,099,400	28,418,279	38,623,766	27,274,009	33,374,872	154,790,326	100.00%
Total Federal	19,363,221	25,522,275	34,518,612	22,296,666	22,500,267	124,201,041	80.24%
Total Non-Federal	7,736,179	2,896,004	4,105,154	4,977,343	10,874,605	30,589,285	19.76%
Primary Non-Federal Agencies*							
Minnesota State University-Mankato	-	-	-	183,739	-	183,739	0.60%
Lumina Foundation for Education	-	-	-	83,008	300,000	383,008	1.25%
Hillsborough County Public Schools	3,423,097	-	-	-	-	3,423,097	11.19%
Gates Foundation	924,741	232,681	-	-	-	1,157,422	3.78%
WI Dept. of Public Instruction	461,841	330,061	1,364,788	2,369,909	985,112	5,511,711	18.02%
NYC Department of Education	-	221,414	-244,350	-	475,000	452,064	1.48%
Milwaukee Public Schools	1,087,409	120,000	249,797	99,000	27,500	1,583,706	5.18%
Walton Family Foundation	-	160,000	719,555	-	-	879,555	2.88%
Grant (William T) Foundation	350,000	60,000	-	600,000	153,933	1,163,933	3.81%
James Irvine Foundation	-	-	-	150,000	-	150,000	0.49%
Chicago Public Schools	-	223,902	228,000	187,944	649,000	1,288,846	4.21%
Madison Metropolitan School District	-	-	99,675	160,000	96,545	356,220	1.16%
Sloan (Alfred P) Foundation	-	-	633,044	550,000	-	1,183,044	3.87%
Minneapolis Public Schools	-	-	-	122,275	40,000	162,275	0.53%
University of Texas-Austin	-	-	-	-	129,139	129,139	0.42%
Great Lakes Higher Education Corp.	-	-	-	-	3,207,555	3,207,555	10.49%
Tulsa Public Schools	-	-	150,000	75,000	150,000	375,000	1.23%
Smith Richardson Foundation	-	280,766	-	-	-	280,766	0.92%
Educause	-	500,000	-	-	-	500,000	1.63%
Spencer Foundation	-	434,625	410,276	137,546	4,433,079	5,415,526	17.70%
John Wiley and Sons	302,502	-	-	-	-	302,502	0.99%
Other Non-Federal Agencies	1,186,589	332,555	494,369	258,922	227,742	2,500,177	8.17%
Total Non-Federal	8,550,964	2,896,004	4,105,154	4,977,343	10,874,605	30,589,285	100.00%

Note: Includes 133 funds. Based on award totals reported to Regents and housed in SoE. Amounts may reflect multi-year funding.

*Non-Federal agencies that contributed greater than \$250,000 in the previous three years.

Federal Sponsored Projects

	2010-11	2011-12	2012-13	2013-14	2013-14	5-year Total	% of Total
Total Awards	27,099,400	28,418,279	38,623,766	27,274,009	33,374,872	154,790,326	100.00%
Total Federal	19,363,221	25,522,275	34,518,612	22,296,666	22,500,267	124,201,041	80.24%
Total Non-Federal	7,736,179	2,896,004	4,105,154	4,977,343	10,874,605	30,589,285	19.76%
Federal Agencies							
Dept. of Education	12,720,574	18,326,704	23,634,979	9,234,555	9,707,828	73,624,640	59.28%
National Science Foundation	3,410,618	4,427,085	9,134,545	11,256,231	9,567,727	37,796,206	30.43%
Dept. of Health & Human Services							
Nat'l Inst. of Health	2,890,520	2,231,966	1,181,150	1,665,832	1,964,235	9,933,703	8.00%
Substance Abuse & Mental Health	245,509	-	-	97,923	100,000	443,432	0.36%
Other DHHS Agencies	-	-	191,160	-	-	191,160	0.15%
Dept. of Labor	-	-	-	-	-	-	0.00%
Dept. of Veterans Affairs	96,000	504,520	-	42,125	74,223	716,868	0.58%
Admin. for Community Living	-	-	-	-	1,036,254	1,036,254	0.83%
Nat. Oceanic & Atmospheric Admin.	-	20,000	-	-	-	20,000	0.02%
Dept. of Defense	-	12,000	-	-	-	12,000	0.01%
National Endowment for the Arts	-	-	15,000	-	-	15,000	0.01%
Other Federal Agencies	-	-	361,778	-	50,000	411,778	0.33%
Total Federal	19,363,221	25,522,275	34,518,612	22,296,666	22,500,267	124,201,041	100.00%

Note: Includes 144 funds. Based on award totals reported to Regents and housed in SoE. Amounts may reflect multi-year funding.

Any questions concerning the material contained in this booklet should be directed to:

School of Education
University of Wisconsin - Madison
1000 Bascom Mall, 377 Education Building
Madison, WI 53706 Telephone: (608)261-1386
Email: janetski@wisc.edu

Publication Date: October 7, 2015

This document is also available on the web: <http://www.education.wisc.edu/busoffice/datadigest/>

IMAGE CREDITS

PHOTOGRAPHY: Jim Escalante

STUDENT ART

FRONT COVER COLLAGE:

(Left to Right)

Kimberly Benson © 2013

Connor Greene © 2014

Juldy Pyo © 2010

BACK COVER COLLAGE:

(Left to Right)

Heejin Hwang © 2011

Kateryna Gudziak © 2012

DIVIDERS:

(Front to Back)

Juldy Pyo © 2010

Kimberly Benson © 2013

Connor Greene © 2014

Heejin Hwang © 2011

Kateryna Gudziak © 2012



School of Education
UNIVERSITY OF WISCONSIN-MADISON

