

Basic Governance Approvals

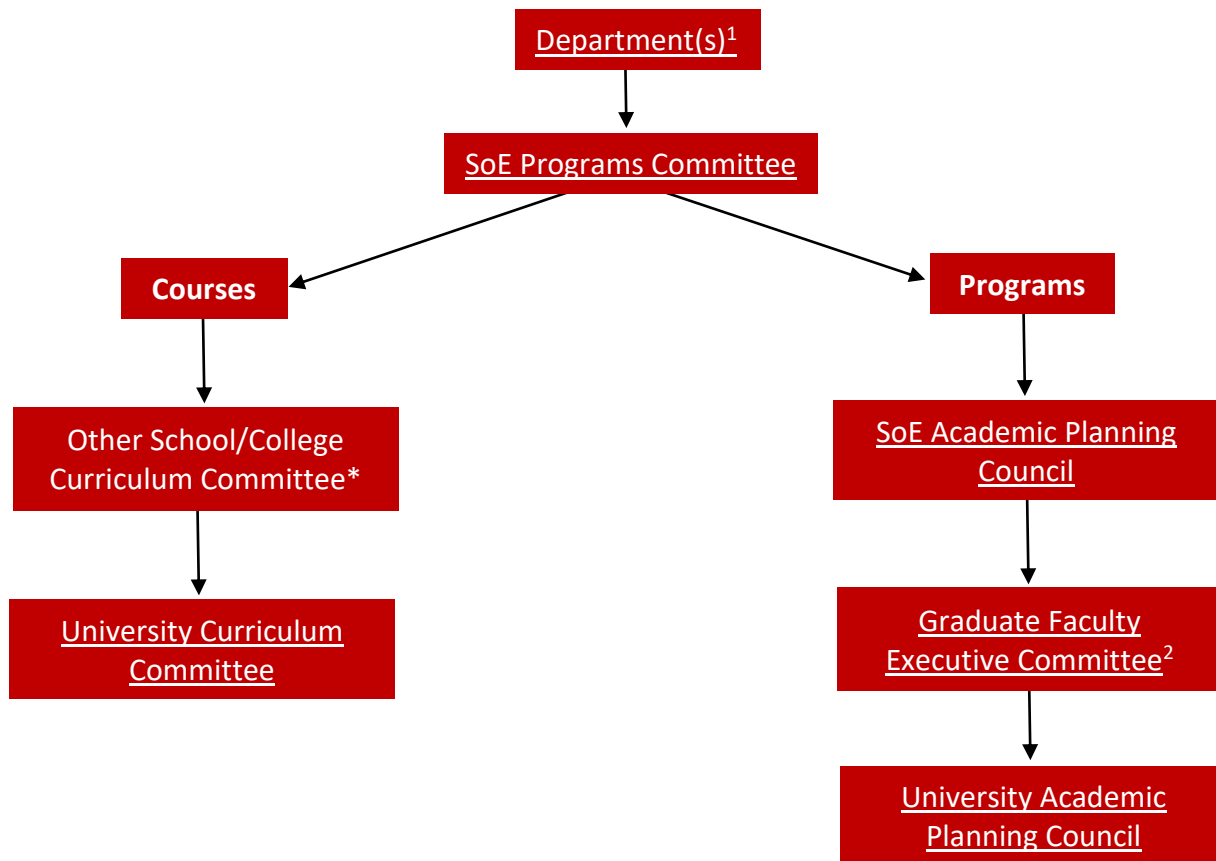
The chart below illustrates the governance process for course/program proposals. Please refer to the Lumen Workflow steps listed on the top right corner of the proposal to view information specific to your course/program proposal.

Some program proposals require additional approval(s) beyond the University Academic Planning Council. For example, new major/degree proposals or requests for online tuition require approval by the UW-System Board of Regents. Teacher certification programs require approval by the Wisconsin Department of Public Instruction.

Contact the SoE Dean's Office with academic planning-related questions or concerns.

See KB for course approval process: <https://kb.wisc.edu/lumen/78280>

See KB for program approval process: <https://kb.wisc.edu/lumen/96386>



*Not all courses need approval from other School/College Curriculum Committees. Courses with the following will need additional approval from other School/College Curriculum Committees:

(1) crosslist with department outside of SoE, (2) general education designations and attributes (LAS credit, breadth, Communications A-B, Quantitative Reasoning A-B, ethnic studies, sustainability, etc.)

¹Committee named link to webpage

²Only graduate programs need approval from GFEC